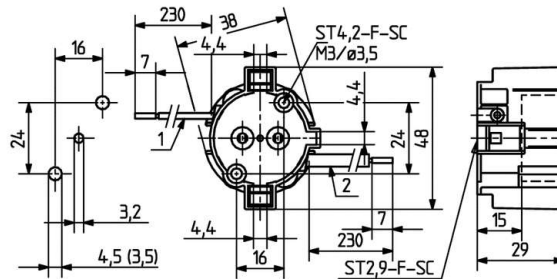
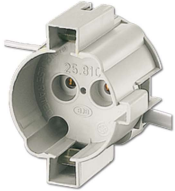


 Create pdf

Lampholders for discharge lamps

25.810.3801

PG12-2



colour	pkg.	wt.	part no.
grey	125	29 g	25.810.3801.81

Connection: with cables attached

Wires: 1. Cu, nickel plated, 1.0 mm², with ferrule, Insulation: PTFE 250° C, ø 2 mm, Cable length: 230 mm

2. Cu, tin plated, 1.0 mm², with ferrule, Insulation silicone 180° C, ø 4.2 mm (ignition cable), Cable length: 230 mm


For High Pressure Metal Halide lamps

Snap in fixing

Schraubbefestigung

Housing: PET

- Continuous operating temperature: T180 for the contact and T210 for the housing

T 180	4 A 1000 V	 kV/pulse
-------	---------------	---

Document generated on: Fr, 10. February 2017 - 13:31